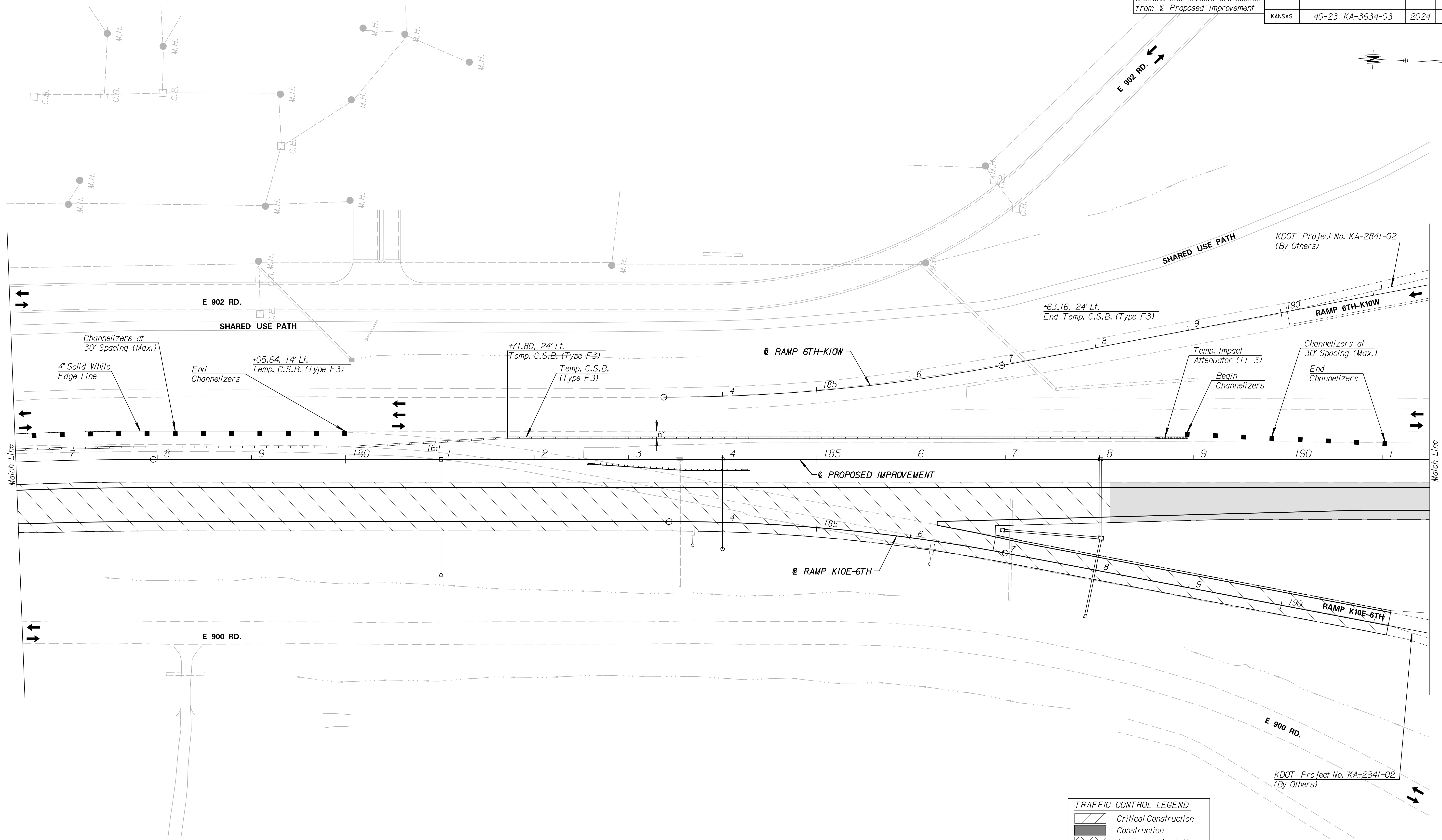


Unless otherwise noted, all stations and offsets are located from \ominus Proposed Improvement

STATE	PROJECT NO.	YEAR	SHEET NO.	TOTAL SHEETS
KANSAS	40-23 KA-3634-03	2024	1734	2985



TRAFFIC CONTROL LEGEND

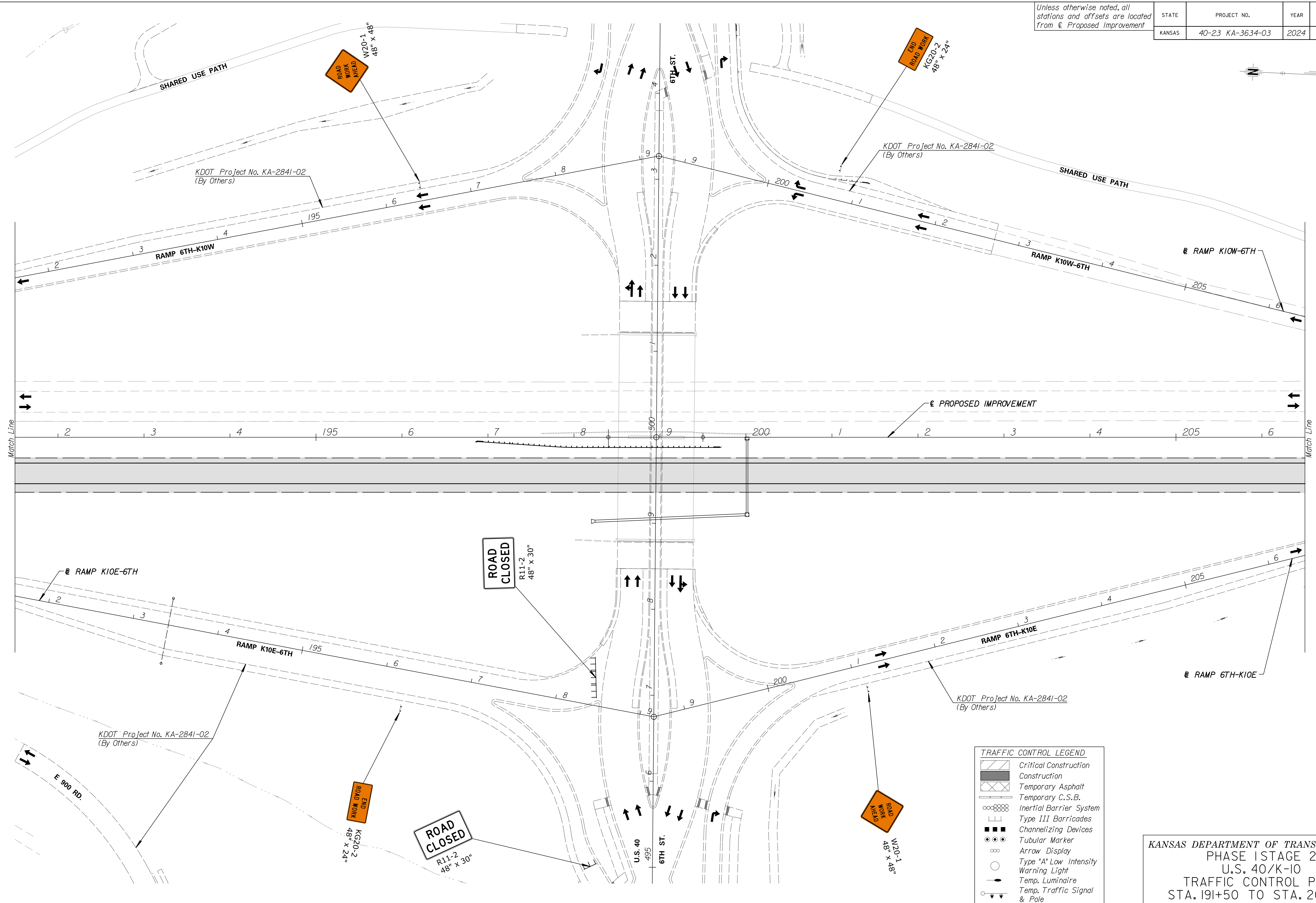
	Critical Construction
	Construction
	Temporary Asphalt
	Temporary C.S.B.
	Inertial Barrier System
	Type III Barricades
	Channelizing Devices
	Tubular Marker
	Arrow Display
	Type 'A' Low Intensity Warning Light
	Temp. Luminaire
	Temp. Traffic Signal & Pole

KANSAS DEPARTMENT OF TRANSPORTATION
 PHASE I/STAGE 2
 U.S. 40/K-10
 TRAFFIC CONTROL PLAN
 STA. 176+50 TO STA. 191+50

Plotted on: Wednesday, May 01, 2024 03:15 PM
 Plot Scale: 1:50
 Plot Queue:
 J:\62780\Print\Plot\1734\Fullpen
 cn:\cadd\lp\valke\centra\dsv\0274472\ks363403cp-PS2-002.dgn

Unless otherwise noted, all stations and offsets are located from @ Proposed Improvement

STATE	PROJECT NO.	YEAR	SHEET NO.	TOTAL SHEETS
KANSAS	40-23 KA-3634-03	2024	1735	2985



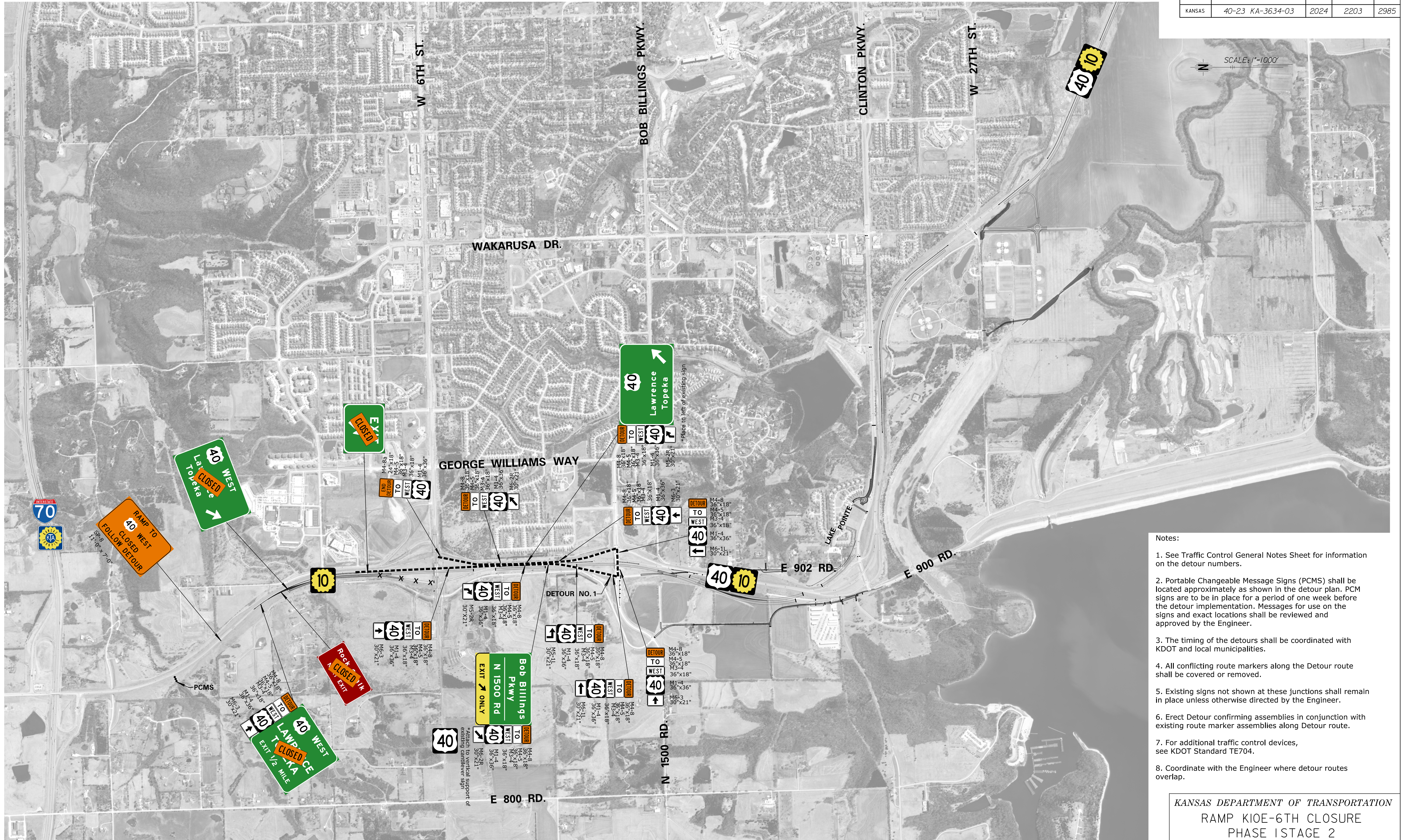
TRAFFIC CONTROL LEGEND

	Critical Construction
	Construction
	Temporary Asphalt
	Temporary C.S.B.
	Inertial Barrier System
	Type III Barricades
	Channelizing Devices
	Tubular Marker
	Arrow Display
	Warning Light
	Temp. Luminaire
	Temp. Traffic Signal & Pole

KANSAS DEPARTMENT OF TRANSPORTATION
 PHASE I STAGE 2
 U.S. 40/K-10
 TRAFFIC CONTROL PLAN
 STA. 191+50 TO STA. 206+50

Plotted on: Wednesday, May 01, 2024 03:15 PM
 Plot Scale: 1:50
 Plot Queue:
 J:\62780\Print\Plot\1\Fullpen
 cn:\cadd\lb\p\valke\centra\dv\0274472\kcs363403cp-PS2-003.dgn

STATE	PROJECT NO.	YEAR	SHEET NO.	TOTAL SHEETS
KANSAS	40-23 KA-3634-03	2024	2203	2985



- Notes:
1. See Traffic Control General Notes Sheet for information on the detour numbers.
 2. Portable Changeable Message Signs (PCMS) shall be located approximately as shown in the detour plan. PCM signs are to be in place for a period of one week before the detour implementation. Messages for use on the signs and exact locations shall be reviewed and approved by the Engineer.
 3. The timing of the detours shall be coordinated with KDOT and local municipalities.
 4. All conflicting route markers along the Detour route shall be covered or removed.
 5. Existing signs not shown at these junctions shall remain in place unless otherwise directed by the Engineer.
 6. Erect Detour confirming assemblies in conjunction with existing route marker assemblies along Detour route.
 7. For additional traffic control devices, see KDOT Standard TE704.
 8. Coordinate with the Engineer where detour routes overlap.

KANSAS DEPARTMENT OF TRANSPORTATION
 RAMP K10E-6TH CLOSURE
 PHASE 1 STAGE 2
 DETOUR NO. 1

Plotted on: Thursday May 02, 2024 02:34 PM
 Plot Queue: Plot Scales: 10000
 J:\62780\Print\Plot\Pl_Fullben
 c:\cadd\ibp\calke\ventr\cadv\c0322856\kca63403cvt-02.dgn